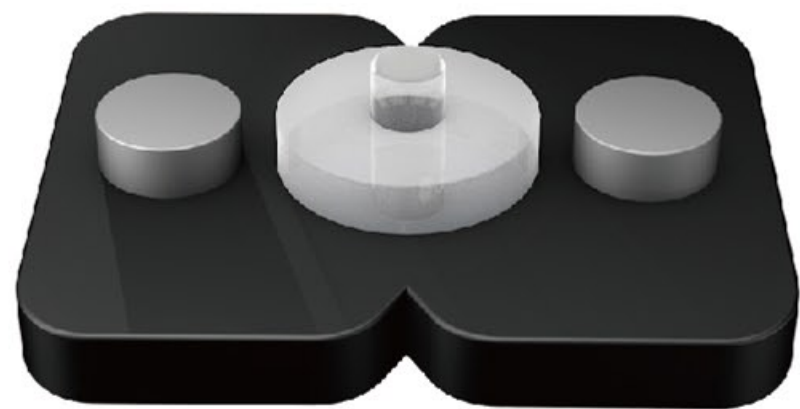


# Invisible Cable



## Features

- Small volume, light weight
- Flame retardant, low smoke, non-toxic
- Visually invisible
- Easy strip
- Field patch cord compatibility
- Superior bending performance



## Applications

- Indoor surface wiring along the wall, slot, ceiling, door frame and corners



## Installation performance

- Min. bend radius: installation 30H, operation 15H
- Temperature range: storage -20~+60°C, installation -5~+40°C, operation -10°C~+60°C



Easy Strip



Eco-friendly



Flame Retardant



Fast Connector



Indoor

• Products can be customized, included but not limited to the above